



**Linda Daly Baker, aws-df, nws**  
w.a.t.e.r.c.o.l.o.r.i.s.t

I would like to thank the Baltimore Watercolor Society for the honor of jurying the Mid-Atlantic Online Exhibition. In this most difficult time, it is amazing that we can still have the wonderful opportunity to exhibit and view great art and be resourceful enough to showcase it in an unexpected way. Hopefully soon, we will all be back to viewing art in person as it was intended.

The work submitted this year was amazing and could easily have filled several exhibitions. It was difficult to limit the exhibition and even harder to select the awards. If you were not selected, please do not be discouraged. Sometimes it's as simple as the quality of the image or the number of paintings submitted with the same subject.

As usual, composition, design, and skill levels are strong considerations and each piece selected brought an element of interest to the exhibition. In terms of the awards, I was looking for that something special to set it apart from the crowd. In some cases, it was a unique vision, or a statement of our times, or perhaps a different way of handling the medium. In all cases, the artist is giving us a glimpse of themselves and a level of creativity.

I found joy in viewing and selecting the artwork and hope you will find equal enjoyment in viewing the exhibition.

With warm regards.....Linda

**2020 Baltimore Watercolor Award Winners**  
**Mid-Atlantic Exhibition**



'Twenty Seconds'- 15" x 15"

Alexis Lavine

**Gold Medal in Memory of  
David Churchill**

Not only is this a well executed painting, it is incredibly poignant for our times. The message is not only clear but so significant for today's climate. The artist has gone beyond just the subject to entertain us with an interesting division of space while keeping the message simple and clear. The square format enhances the simplicity along with giving it a more contemporary feeling. The asymmetrical division of space also adds to the feeling of today's design while the execution speaks to a well done traditional approach. The painting may appear almost monochromatic but the subtle use of warm and cool separate the subject from the narrative nicely.

'Demoiselle'- 17 3/4" x 13"

Maria Payer

**Silver Medal**

What a beautifully executed painting. Everything about this piece is pleasing to the eye. The skill level matches the freshness of the day and her youth in an easy way. Showcasing an everyday activity is enhanced by the fact that she is facing away from us almost taking us with her. This is a painting that easily evokes emotion and a pause in our busy lifestyles. The composition is stellar along with a lovely play of warm against cool. I was particularly enamored by the treatment of edges. Hard edges and yet gentle at the same time with a feeling that every brush stroke counts. No use of bells or whistles here just straight direct painting done well.





**'To Dance with my Father Again' 22"x22"**  
Jinnie May  
**Bronze Medal**

A very intriguing painting, telling a wonderful story. Unlike a bold painting, the color palette and message are soft and invite careful consideration and intimacy. The creativity & message is intriguing. The wise use of black to encompass the main figure is good use of the design elements & the use of warm & cool takes it away from monochromatic and adds interest. The curvilinear approach not only adds to the story, it encourages the viewer to wander throughout the painting and take in all the information.

**'We are Many & One'**  
19 1/2" x 25"  
Rosa Ines Vera  
**Jerry's Artarama,  
Dr. Ph. Martin's,  
Air Float Systems,  
HK Holbein Artist  
Materials, and  
Jack Richeson and  
Co. Award**

Another wonderful painting full of creativity and as the antithesis of the painting above, the message is saturated with brilliant color. As entertaining as the color is, the message is stronger.



This is a case where the title plays a larger part in our understanding of the message. Again, speaking of today's social climate, this could just as easily be about today's dilemma as it could be about any moment in time making the message timeless. We have all felt these emotions on many levels. Do we fit in? Do we want to? Should we social distance? Was it something I said? The list could be endless and the cool temperature dominance does much to play up the well-placed warm colors.



'Eyes of the Beholder'-26" x 20"

Sally Mook

**Pennsylvania Watercolor Society, Jerry's Artarama, Dr. Ph. Martin's, Ampersand Art Supply Inc., and Jack Richeson & Co. Award**

What sets this painting apart from a portrait or even figurative work is the creativity involved. The almost illustrative way the scarf is wrapped around the figure showcases design and an unexpected element. The crazy hair is offset by the almost far away look in her eye. Were she smiling, we would not be as intrigued by her thoughts. The lack of modeling in her garments give a contemporary and graphic feeling to this piece. I think the combination of simplicity with the complexity of her expression keeps the viewer engaged. The depth of expression is compelling.

'Morning at the Met'  
30" x 22"

Laurie Goldstein-Warren

**Virginia Watercolor Society,  
Jerry's Artarama, Dr. Ph. Martin's,  
JFM Enterprises Inc., and  
Strathmore Artists Papers Award**

This majestic structure is well handled in terms of scale and the size of the crowd. The shift of warm to cool to neutral is very successful and entertaining. The well-placed violet and red make the colors sing and leaves us with a great feeling of wanting more. This is a good example of creativity with color enhancing a typical subject bringing it to life. The placement of the light shape at the bottom of the painting is brilliant to bring the eye of the viewer to the lower portion of the painting with the variety of dancing colors through the crowd weaving us diagonally into the heart of the painting.





'Punch Buggy Red'  
29" x 29"

Matthew Bird

**Potomac Valley Watercolorists,  
Jerry's Artarama,  
Creative Catalyst Productions,  
and Jack Richeson & Co. Award**

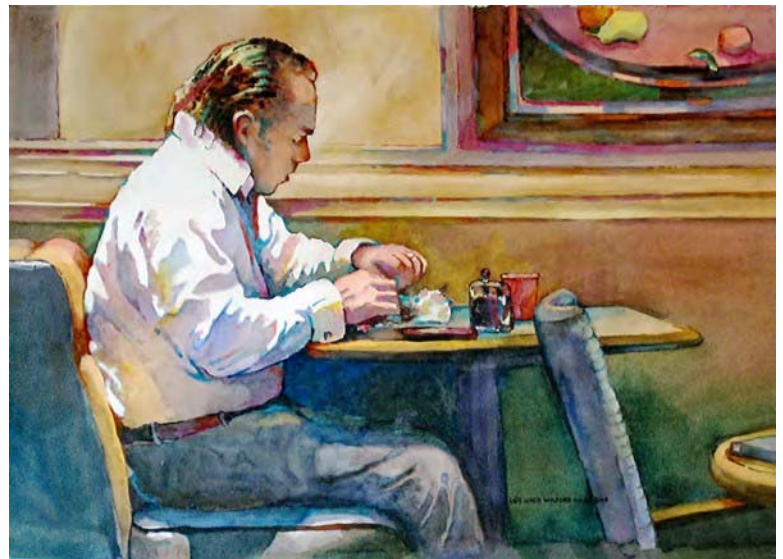
Love the graphic division of space and the way the colors bump against each other. The curvilinear is perfection with the geometric dominance enhanced by the subtle use of piping.

'Breakfast Alone'  
20" x 30"

Lois A. Ward Wolford

**The BWS Award in  
Memory of Rhett Murphy**

This artist has captured the solitary feeling of aloneness really well but the composition is what sets it apart. The delicate placement of the reds throughout the painting unify all the shades of cool color.



'Boring Game'  
11" x 15"

Jane Thomas

**The Schiller Family,  
Navis Pack and Ship (Baltimore),  
and Jerry's Artarama Award**

This painting is so easy to live with. The lack of background and the white of the clothing, allow the viewer to concentrate on her attitude and almost hear her thoughts. The use of lost and found edges is quite masterful.



'Jean in a Yellow Hat'

17" x 20.5"

Pam Wenger

**Cheap Joe's Art Stuff Award**

This painting is all about the attitude of her hat and her reaction to it. The expression on her face sets it apart from a typical portrait.



'Back Street of Copenhagen' 19" x 19"

Angela Lacy

**Colson Art Printing Award**

This painting has almost a wood cut quality that is enhanced by the patina and texture on the buildings. The clean crisp shapes invite the viewer to wander down the lone street.

'Passing Through'

13.75" x 11"

Anni Matsick

**M. Graham & Co. Award**

The beauty of this painting is in the ethereal quality the artist has captured. The pale colors add to the feeling with the repetition of the blue directing the eye. The interesting division of space and choice of color in the small orange shapes pick up the tones of the face.





'Water Lilies 2'

20" x 22.5"

Anne Cordes

**Princeton Artists Brush Co. Award**

What sets this painting apart is the design elements more so than the skill level although it is very well done. The placement of the large blue resting area works well to offset the multiple overlapping shapes.

'Configuration'

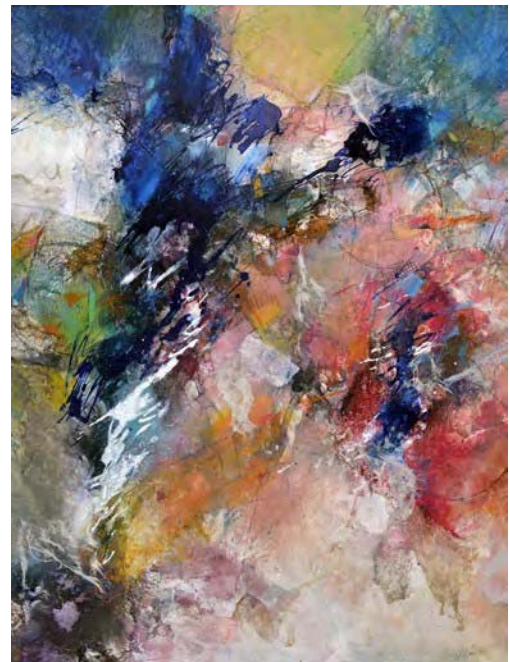
18" x 23"

Mei Shu

**Blick Artists Materials Award**

This non-objective painting is intriguing not only for the color placement but the sense of motion.

There is a feeling of high energy and movement. The triangle of warm colors anchors the composition.



'Koi Study I'

16" x 22"

Annette Uroskie

**Edward Longley Memorial Award**

**Donated by Sharon Longley**

This koi painting has an Oriental flavor and the feeling of a sumi painting. The strong use of the abstract black undefined shapes added with the feeling of the swirling water makes the shape of the koi believable. The movement in the background increases the sense of movement in the fish.



'Love in the time of Corona'  
22" x 14"

Margitta Hanff  
**Delaware Watercolor Society  
Award**

As strong as the technical ability is in this painting, the strength comes from the emotional quality. We can feel her strength coming right through the glass to touch our hearts.



'Woodland Intricacy'  
30" x 37"

Linda Verhagen  
**Philadelphia Watercolor Society  
Award**

What a wonderful cross between abstraction and realism. The tree is obvious and yet the handling is unexpected. The use of rich colors adds to the intrigue.

'Apple and Eve'  
10" x 10"

Marie Westhaver  
**Pittsburgh Watercolor Society  
Award**

This simple apple is painted in a way that we can taste the juice. We can feel the texture captured on the skin in the form of water droplets and painted so well, we almost need to take a bite.

